

# **Flexera Software Product Download and License Guide for AdminStudio 11.x**

# Flexera Software Product Download and License Guide for AdminStudio 11.x

**Part Number:** ADS-1150-LG02

**Product Release Date:** July 2012

## Copyright Notice

Copyright © 2014 Flexera Software LLC. All Rights Reserved.

This product contains proprietary and confidential technology, information and creative works owned by Flexera Software LLC and its licensors, if any. Any use, copying, publication, distribution, display, modification, or transmission of such technology in whole or in part in any form or by any means without the prior express written permission of Flexera Software LLC is strictly prohibited. Except where expressly provided by Flexera Software LLC in writing, possession of this technology shall not be construed to confer any license or rights under any Flexera Software LLC intellectual property rights, whether by estoppel, implication, or otherwise.

All copies of the technology and related information, if allowed by Flexera Software LLC, must display this notice of copyright and ownership in full.

## Intellectual Property

For a list of trademarks and patents that are owned by Flexera Software, see <http://www.flexerasoftware.com/intellectual-property>. All other brand and product names mentioned in Flexera Software products, product documentation, and marketing materials are the trademarks and registered trademarks of their respective owners.

## Restricted Rights Legend

The Software is commercial computer software. If the user or licensee of the Software is an agency, department, or other entity of the United States Government, the use, duplication, reproduction, release, modification, disclosure, or transfer of the Software, or any related documentation of any kind, including technical data and manuals, is restricted by a license agreement or by the terms of this Agreement in accordance with Federal Acquisition Regulation 12.212 for civilian purposes and Defense Federal Acquisition Regulation Supplement 227.7202 for military purposes. The Software was developed fully at private expense. All other use is prohibited.

# Contents

---

<b>1</b>	<b>Downloads and Licensing for AdminStudio 11.x. . . . .</b>	<b>5</b>
	<b>Downloading AdminStudio, Add-Ons, Service Packs, and Other Installations . . . . .</b>	<b>6</b>
	<b>Licensing Overview for AdminStudio . . . . .</b>	<b>7</b>
	<b>Activating AdminStudio for Node-Locked Licenses. . . . .</b>	<b>7</b>
	<b>Setting up the Self-Hosted Licensing Environment for AdminStudio . . . . .</b>	<b>8</b>
	Background Information about Self-Hosted Licensing. . . . .	8
	Setting Up a New Self-Hosted License Server . . . . .	10
	<i>Obtaining the FlexNet Licensing Server Software. . . . .</i>	10
	<i>Setting Up the FlexNet Licensing Server Software on the Licensing Server and Obtaining a Self-Hosted License . . .</i>	11
	Obtaining a Self-Hosted License for an Existing Licensing Server . . . . .	15
	<i>Generating a New Self-Hosted License for an Existing Licensing Server . . . . .</i>	16
	<i>Generating an Upgrade Self-Hosted License for an Existing FlexNet Licensing Server . . . . .</i>	17
	Connecting a User's Machine to the License Server for AdminStudio License Check-Outs and Check-Ins . . . . .	18
	<b>Using the License Server Manager (Imadmin) on a FlexNet Licensing Server to Import Self-Hosted Licenses and Perform Related Tasks. . . . .</b>	<b>19</b>
	Launching Imadmin. . . . .	19
	Importing a License File into Imadmin. . . . .	21
	Administering a Vendor Daemon . . . . .	23
	Viewing System Information about the FlexNet Licensing Server . . . . .	26

## Contents

# Downloads and Licensing for AdminStudio 11.x

This document contains background information on the different licensing models that are available for AdminStudio 11.x. This document also contains instructions for various tasks:

- Obtaining installations of AdminStudio 11.x, stand-alone tools, and more
- Setting up licensing for AdminStudio 11.x



**Note:** If you are using a different version of AdminStudio, refer to the appropriate instructions that are posted at the following site:

[Instructions for Flexera Software Product Downloads and Licensing](#)

## Licensing Options

Two different licensing models are available for AdminStudio:

- **Node-locked licensing**—With this model, the product license is tied to a specific user and machine. This model is the traditional option and the one that is most often purchased.

A node-locked license for AdminStudio requires a product serial number to activate the product.

If you are using the node-locked type of license, it is your responsibility to maintain your license on your machine. Sharing this type of license between multiple users does not comply with Flexera Software products' end-user license agreements (EULAs).

- **Self-hosted licensing**—If your organization purchased self-hosted licenses for a Flexera Software product, you need to connect your product to the licensing server that you are using.

To learn more about these different licensing models and determine which option best fits your requirements, contact your Flexera Software sales representative or your preferred reseller.

# Downloading AdminStudio, Add-Ons, Service Packs, and Other Installations

The following installations are available for download from the Flexera Software Product and License Center:

- AdminStudio
- Add-ons (if you are entitled to them) such as the Standalone Repackager and the Standalone QualityMonitor
- FlexNet Licensing server software (if you purchased self-hosted licenses and you need to set up your organization's licensing server)
- AdminStudio service packs (if available)



**Note:** When your AdminStudio purchase is made, an account is created for your organization, a user account for the purchaser is added to the account in the Product and License Center, and a welcome email message with sign-in credentials is sent to the purchaser. If you are the purchaser of the product, you can sign in to the Product and License Center with the credentials that are included in the welcome email message. If you are not the purchaser and a user account has not been added to the account for you, you can add yourself by visiting the [Join New Account page \(https://flexerasoftware.flexnetoperations.com/control/inst/registeraccount\)](https://flexerasoftware.flexnetoperations.com/control/inst/registeraccount), and entering your account ID and serial number (which are included in your order confirmation email message).



## Task

### To download any of the installations:

1. Sign in to the [Product and License Center \(https://flexerasoftware.flexnetoperations.com/\)](https://flexerasoftware.flexnetoperations.com/).
2. In the left navigation, under **Entitlements**, click **Product List**.  
  
The **Product List** page shows all of the product lines to which your account is entitled. If you do not have access to multiple products, clicking the **Product List** link opens the **Product Information** page directly.
3. If the **Product List** page shows multiple products, click the **AdminStudio** link. The **Product Information** page opens.
4. In the **Product and File Downloads** column, click the AdminStudio link for the version that you want to download. The **Product Download** page opens.
5. Click the appropriate download button.

Once you have downloaded an installation, run the downloaded installation on the machine on which you want to use the product.

# Licensing Overview for AdminStudio

The following table explains how to set up the licensing for the type of license that you purchased.

**Table 1-1:** License Types

License Type	Description of License Type	Instructions
<b>Node-locked license of AdminStudio</b>	This type is tied to a specific user and machine. A node-locked license requires a product serial number to activate the product. This model is the traditional option.	For instructions, see <a href="#">Activating AdminStudio for Node-Locked Licenses</a> .
<b>Self-hosted license of AdminStudio</b>	For this type, the product on each user's machine must be connected to a licensing server that your organization sets up. The licensing server must have a Flexera Software-generated license file.	To set up a new or existing license server, see <a href="#">Setting up the Self-Hosted Licensing Environment for AdminStudio</a> .  To connect a machine that has the product to the license server, see <a href="#">Connecting a User's Machine to the License Server for AdminStudio License Check-Outs and Check-Ins</a> .

## Activating AdminStudio for Node-Locked Licenses

The node-locked licensing model requires that you activate AdminStudio on your machine. Activation verifies that the product has not been activated on more machines than allowed by the AdminStudio EULA. If you are using the node-locked type of license, it is your responsibility to maintain your license on your machine.



**Task** **To activate AdminStudio:**

Launch the product that you want to activate. The activation wizard opens. Use this wizard to enter your serial number and activate your product.

For more information about activating your product if you purchased a node-locked license of AdminStudio, see the “Activating AdminStudio” section of the AdminStudio Help Library that is installed with AdminStudio.

# Setting up the Self-Hosted Licensing Environment for AdminStudio

If your organization has purchased self-hosted licenses of AdminStudio, a FlexNet Licensing Server that you set up in your environment manages how many instances of the product can be run simultaneously. Each user who wants to launch the product needs to establish a connection with the licensing server to check out and check in licenses when needed.

## Background Information about Self-Hosted Licensing

The following process describes what occurs each time that a user in your organization starts the product that is using self-hosted licensing.

1. A user launches the product.
2. The FlexEnabled code on the user's machine establishes a connection with the FlexNet Licensing Server and requests a license.
3. The FlexNet Licensing Server checks whether a license is available. If a license is available, the FlexNet Licensing Server checks it out. In addition, the server sends a message to the user's machine. The message grants permission to run the product.
4. The FlexEnabled code on the user's machine receives the message and opens the product.

When the user exits the product, the FlexEnabled code on the user's machine sends a message to the FlexNet Licensing Server, and the license is checked back in, making it available for another machine.

### Components of a FlexNet Licensing Server

A FlexNet Licensing Server consists of the following components.

**Table 1-2:** FlexNet Licensing Server Components

Component	Description
<b>FlexEnabled Product</b>	A FlexEnabled product is one that uses FlexNet Publisher Licensing Toolkit to implement its license models. InstallShield, AdminStudio, and InstallAnywhere are all FlexEnabled products. These FlexEnabled product communicate with the FlexNet Licensing Server to request a license when needed.
<b>License File</b>	A license file (.lic) is a text file that contains a licensing certificate. It contains information about the server machine and vendor daemons. It also contains data about the number of self-hosted and concurrent licenses that were purchased.



Table 1-2: FlexNet Licensing Server Components (cont.)

Component	Description
<b>License Server Manager</b>	<p>The license server manager on the FlexNet Licensing Server handles the initial contact with the FlexEnabled product, passing the connection on to the vendor daemon. The license server manager starts and maintains vendor daemons for serving license rights.</p> <p>Two versions of the license server manager are available:</p> <ul style="list-style-type: none"><li>• <b>ladmin</b>—This is the latest version of the license server manager. This version has a graphical user interface.</li><li>• <b>lmgd</b>—This is the original version of the license server manager. This version has a command-line interface.</li></ul>
<b>Vendor Daemon</b>	<p>A vendor daemon is a file that is associated with the vendor who developed the FlexEnabled product. If you are using a FlexNet Licensing Server to manage licenses for InstallShield, AdminStudio, or InstallAnywhere, as well as for products that are developed by other companies and are also FlexEnabled, your FlexNet Licensing Server will have one vendor daemon for Flexera Software, and one additional vendor daemon for each additional vendor.</p> <p>The vendor daemon handles the communication between the FlexEnabled product and the FlexNet Licensing Server; it also keeps track of how many licenses are checked out and who has them.</p>

Note the following about the FlexNet Licensing Server components:

- **Communication via TCP/IP**—InstallShield, AdminStudio, and InstallAnywhere communicate with the vendor daemon through TCP/IP network communications. The products and the daemon processes can run on separate machines on your network, across any size wide-area network.
- **Machine-independent communication**—The format of the traffic between the Flexera Software product and the FlexNet Licensing Server is machine independent, allowing for heterogeneous networks. This means that the FlexNet Licensing Server machine and the machine that is running the Flexera Software product can be different hardware platforms or even different operating systems (for example, UNIX and Windows).
- **Vendor daemon termination scenario**—If the vendor daemon terminates for any reason, all users lose their licenses (though this does not mean that the applications suddenly stop running). Users normally regain their license automatically when the license server manager restarts the vendor daemon; however, they may exit the product if the vendor daemon remains unavailable.

## Setting Up a New Self-Hosted License Server

If you are setting up a new self-hosted licensing environment to manage self-hosted licenses of AdminStudio, you will need to download the FlexNet Licensing Server software, install the software, and obtain the license. This section explains how:

- [Obtaining the FlexNet Licensing Server Software](#)
- [Setting Up the FlexNet Licensing Server Software on the Licensing Server and Obtaining a Self-Hosted License](#)

Note that if you are going to use an existing FlexNet Licensing Server to manage your self-hosted licenses, you need to obtain the license file. To learn more, see [Obtaining a Self-Hosted License for an Existing Licensing Server](#).



**Tip:** For instructions on how to connect a machine that has AdminStudio to the license server, see [Connecting a User's Machine to the License Server for AdminStudio License Check-Outs and Check-Ins](#).

## Obtaining the FlexNet Licensing Server Software

The FlexNet Licensing Server software manages license check-out and check-in requests from users who have self-hosted licenses. The installation for the FlexNet Licensing Server consists of a single, compressed executable file that installs the self-hosted licensing software. You can run this installation on the machine that you are designating as your licensing machine. The installation is needed only if you have purchased self-hosted licenses of AdminStudio.

The FlexNet Licensing Server installation for Windows-based systems is available for download from the Product and License Center, along with the AdminStudio installation, service packs, other downloads. For instructions on how to obtain the download, see [Downloading AdminStudio, Add-Ons, Service Packs, and Other Installations](#).

For tips on selecting a machine that you can use as your self-hosted licensing server, see the “Selecting a License Server Machine” chapter of the License Administration Guide, which is available from the [download page for license server managers \(http://www.globes.com/support/fnp\\_utilities\\_download.htm\)](http://www.globes.com/support/fnp_utilities_download.htm).



**Note:** If you would like to use a machine that has an operating system other than Windows as your FlexNet Licensing Server, you can download the appropriate installation from the following site:

[http://www.globes.com/support/fnp\\_utilities\\_download.htm](http://www.globes.com/support/fnp_utilities_download.htm)

## Setting Up the FlexNet Licensing Server Software on the Licensing Server and Obtaining a Self-Hosted License

Once you have obtained the FlexNet Licensing Server software, you can install this software on the machine that you want to use as your licensing server. Configuring a FlexNet Licensing Server for managing self-hosted licenses of AdminStudio requires that you obtain a license file (.lic) from the Product and License Center.

The FlexNet Licensing Server software includes a license server manager (ladmin). The license server manager has a local Web-based user interface that lets you perform tasks such as the following ones:

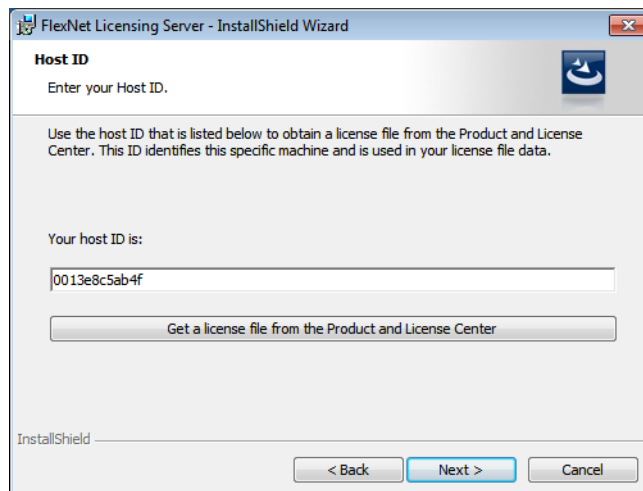
- Import existing license files.
- Perform all server configuration and most administration functions.
- Add or remove users, and configure their privileges.

The following instructions explain how to install and configure the FlexNet Licensing Server software for self-hosted licenses.



**Task** *To install the FlexNet Licensing Server and obtain a self-hosted license file (.lic):*

1. Launch the FlexNet Licensing Server installation.
2. On the **Host ID** dialog, click the **Get a license file from the Product and License Center** button.



Clicking this button opens a Web page that has a link to the Product and License Center. Click that link and then sign in to the Product and License Center.

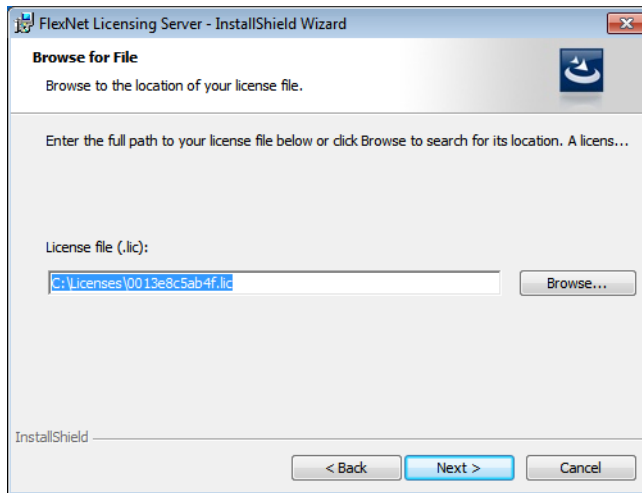


**Tip:** If you do not have an Internet connection on the machine on which you are installing the FlexNet Licensing Server software, sign in to the [Product and License Center \(https://flexerasoftware.flexnetoperations.com/\)](https://flexerasoftware.flexnetoperations.com/) on a machine that does have an Internet connection.

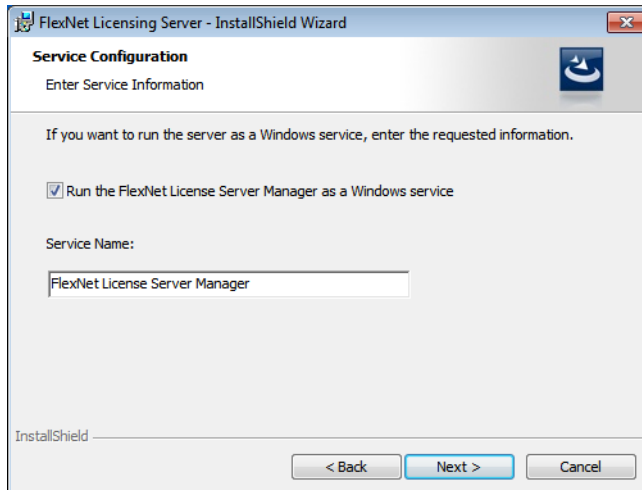
3. In the Product and License Center, acquire the license file for the specific machine on which you are installing the FlexNet Licensing Server:
  - a. In the left navigation, under **Entitlements**, click **Product List**.

The **Product List** page shows all of the product lines to which your account is entitled. If you do not have access to multiple products, clicking the **Product List** link opens the **Product Information** page directly.
  - b. If the **Product List** page shows multiple products, click the **AdminStudio** link. The **Product Information** page opens.
  - c. Click the **Licenses** link for the product that you are installing and configuring. The **License Information** page opens. This page shows details about the used and unused licenses of the product.
  - d. Find an unused license in the list and select the **License Applicable to Product(s)** check box that pertains to that license.
  - e. At the bottom of the page, click the **Generate** button. The **Generate Licenses** page opens.
  - f. In the **Number of Licenses to Generate** box, enter the number of licenses that you want to allow the FlexNet Licensing Server to manage.
  - g. In the **Server Host ID** box, enter the host ID that pertains to the specific machine on which you are installing the FlexNet Licensing Server. The host ID is displayed on the **Host ID** dialog of the FlexNet Licensing Server installation.
  - h. If you are configuring a redundant licensing server cluster, complete the other settings as needed.
  - i. Click the **Generate** button. The **View Licenses** page opens. This page shows details that the Product and License Center will use to create the license file for the FlexNet Licensing Server.
  - j. Click the **Save All** button. The Product and License Center displays a dialog box that lets you specify the location where you want to download the license file.
  - k. Specify a location that is always accessible by the machine on which you are installing the FlexNet Licensing Server. The Product and License Center downloads the .lic file to the location that you specified. The file is named *HostID.lic*, where *HostID* is the host ID that you specified when you obtained the .lic file. You can change the name of this file if it makes it easier to manage it.

- Return to the **Host ID** dialog in the FlexNet Licensing Server installation, and click the **Next** button. The **Browse for File** dialog opens.



- In the **License file (.lic)** box, you can optionally enter the path for the .lic file that you want to use on the current machine, or click the **Browse** button to navigate to the file. If you select an .lic file, the FlexNet Licensing Server uses this file in its current location; the file is not copied to a new location or renamed. Note that you can later use the license server manager (ladmin) to add license files to the FlexNet Licensing Server.
- Click the **Next** button. The **Service Configuration** dialog opens.

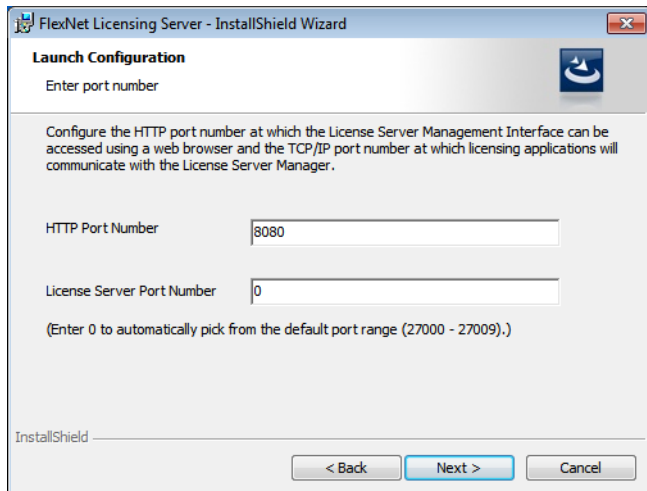


- If you want to run the FlexNet Licensing Server as a Windows service, select the check box, and enter the name that you would like to use for the service.



**Important:** To achieve the highest level of availability, it is recommended that you choose to run the FlexNet License Server Manager as a Windows service. If it is run as a Windows service and the FlexNet Licensing Server machine needs to be restarted, the service is also restarted. Therefore, no manual intervention is needed to make the FlexNet Licensing Server available again to users or machines who try to check out licenses.

8. Click the **Next** button. The **Launch Configuration** dialog opens.



9. In the **HTTP Port Number** box and the **License Server Port Number** box, enter the appropriate port numbers. It is recommended that you leave the default values for these boxes.

The HTTP port number is used to host a Web server for monitoring which licenses are in use and which machines are using them.

The license server port number is used for communication between the vendor daemon on the FlexNet Licensing Server and FlexNet Enabled products (such as AdminStudio).

10. Complete the remaining dialogs in the installation. The last dialog has a check box that lets you indicate whether you want to launch the FlexNet License Server Manager Web application, which is the license server manager (ladmin).

The installation installs the FlexNet Licensing Server on your machine. If you selected the check box on the last dialog, the installation launches the license server manager.

To test to see if the server is running, open a Web browser on the machine on which you ran the installation and go to the following URL (but substitute the appropriate port number in place of *PortNumber*):

<http://localhost:PortNumber/>

You can also visit this portal from another machine by going to the following URL. Note that your machine's firewall settings may need to be modified in order to access this site.

<http://MachineName:PortNumber/>

*MachineName* is the name of the machine that has the FlexNet Licensing Server software. *PortNumber* is the port number that you entered in the installation; 8080 is the default port number.



**Important:** In many organizations, the person who sets up the FlexNet Licensing Server to manage self-hosted licenses is not the same person who installs and uses AdminStudio. If this is the case in your organization, ensure that you inform users of AdminStudio the following information, since they will need to know it when they install AdminStudio and connect to the FlexNet Licensing Server:

- Name or IP address of the server on which the FlexNet Licensing Server software was installed
- License server port number that you entered on the Launch Configuration dialog. (In most cases, this value is left blank. If you leave this blank, inform users of AdminStudio that they should leave the port number setting in the AdminStudio installation blank.)

## Obtaining a Self-Hosted License for an Existing Licensing Server

If you are going to use an existing FlexNet Licensing Server to manage your self-hosted licenses, you need to obtain a self-hosted license file, but you do not need to install the FlexNet Licensing Server software.

The procedure for obtaining a license file from the Product and License Center for an existing licensing server differs slightly, depending on whether you purchased a standard self-hosted license file or an upgrade self-hosted license file:

- A standard self-hosted license file lets you manage self-hosted licenses for one version of AdminStudio.

For instructions on how to obtain this type of license file, see [Generating a New Self-Hosted License for an Existing Licensing Server](#).

- An upgrade self-hosted license file lets you manage self-hosted license files for the new version of AdminStudio, as well as for earlier versions that you previously purchased. Note that an upgrade self-hosted license file does not provide additional licenses. It simply upgrades the licenses that are contained in an existing file.

For instructions on how to obtain this type of license file, see [Generating an Upgrade Self-Hosted License for an Existing FlexNet Licensing Server](#).

## Generating a New Self-Hosted License for an Existing Licensing Server

A standard self-hosted license file lets you manage self-hosted licenses for one version of AdminStudio. Use the Product and License Center to acquire the license file for the specific machine on which you are using the FlexNet Licensing Server software:



### Task

**To obtain a new standard self-hosted license file (.lic) that lets you manage self-hosted licenses for one version of AdminStudio:**

1. Sign in to the [Product and License Center \(https://flexerasoftware.flexnetoperations.com/\)](https://flexerasoftware.flexnetoperations.com/).
2. In the Product and License Center, acquire the license file for the specific machine on which you are installing the FlexNet Licensing Server:
  - a. In the left navigation, under **Entitlements**, click **Product List**.

The **Product List** page shows all of the product lines to which your account is entitled. If you do not have access to multiple products, clicking the **Product List** link opens the **Product Information** page directly.
  - b. If the **Product List** page shows multiple products, click the **AdminStudio** link. The **Product Information** page opens.
  - c. Click the **Licenses** link for the product that you are installing and configuring. The **License Information** page opens. This page shows details about the used and unused licenses of the product.
  - d. Find an unused license in the list and select the **License Applicable to Product(s)** option that pertains to that license.
  - e. At the bottom of the page, click the **Generate** button. The **Generate Licenses** page opens.
  - f. In the **Number of Licenses to Generate** box, enter the number of licenses that you want to allow the FlexNet Licensing Server to manage.
  - g. In the **Existing License Hosts** list, select the appropriate option. If any existing servers are configured for this self-hosted license, they are listed in this box.
  - h. If you are configuring a redundant licensing server cluster, complete the other settings as needed.
  - i. Click the **Generate** button. The **View Licenses** page opens. This page shows details that the Product and License Center will use to create the license file for the FlexNet Licensing Server.
  - j. Click the **Save All** button. The Product and License Center displays a dialog box that lets you specify the location where you want to download the license file.
  - k. Specify a location that is always accessible by the FlexNet Licensing Server machine. The Product and License Center downloads the .lic file to the location that you specified. The file is named *HostID.lic*, where *HostID* is the host ID that you specified when you obtained the .lic file. You can change the name of this file if it makes it easier to manage it.

Once you have obtained the self-hosted license file, you can import it into the FlexNet Licensing Server. For instructions, see [Importing a License File into lmadmin](#).



## Generating an Upgrade Self-Hosted License for an Existing FlexNet Licensing Server

An upgrade self-hosted license file lets you manage self-hosted license files for the new version of AdminStudio, as well as for earlier versions that you previously purchased. Note that an upgrade self-hosted license file does not provide additional licenses. It simply upgrades the licenses that are contained in an existing file.



**Task** *To obtain an upgrade self-hosted license file (.lic) that lets you manage self-hosted licenses for multiple versions of AdminStudio:*

1. Sign in to the [Product and License Center \(https://flexerasoftware.flexnetoperations.com/\)](https://flexerasoftware.flexnetoperations.com/).
2. In the Product and License Center, acquire the license file for the specific machine on which you are installing the FlexNet Licensing Server:
  - a. In the left navigation, under **Entitlements**, click **Product List**.

The **Product List** page shows all of the product lines to which your account is entitled. If you do not have access to multiple products, clicking the **Product List** link opens the **Product Information** page directly.
  - b. If the **Product List** page shows multiple products, click the **AdminStudio** link. The **Product Information** page opens.
  - c. Click the **Licenses** link for the product version that you are configuring. The **License Information** page opens. This page shows details about the used and unused licenses of the product. Typically, the details on this page show that you have no available licenses; this is because an upgrade self-hosted license does not provide additional licenses. It simply upgrades the existing licenses.
  - d. Find the license that you want to upgrade, and click its **Upgrade** button. The **View Licenses** page opens. Note that if you are not eligible for an upgrade license, the **Upgrade** button is not displayed.
  - e. Click the **Save All** button. The Product and License Center displays a dialog box that lets you specify the location where you want to download the license file.
  - f. Specify a location that is always accessible by the FlexNet Licensing Server machine. The Product and License Center downloads the .lic file or files to the location that you specified. The file is named *HostID.lic*, where *HostID* is the host ID that you specified when you obtained the .lic file. You can change the name of this file if it makes it easier to manage it.

Once you have obtained the upgrade self-hosted license file, you can import it into the FlexNet Licensing Server. For instructions, see [Importing a License File into lmadmin](#).

## Connecting a User's Machine to the License Server for AdminStudio License Check-Outs and Check-Ins

If your organization purchased self-hosted licenses for AdminStudio, your organization must first set up the FlexNet Licensing Server. Once that has been done, you need to identify the FlexNet Licensing Server that you are using on the machine where you install AdminStudio.



### Task

#### To identify the FlexNet Licensing Server for AdminStudio:

1. Launch AdminStudio. Before the product starts, the activation wizard opens.
2. Select the **Configure the product to get license information from a license server** option and then click the **Next** button. The product displays the **Specify License Server** dialog.
3. In the **Server** box, enter the name or IP address of the license server, or click the **Browse** button to navigate to the server.
4. If the FlexNet Licensing Server that was configured in your environment uses a custom port number, enter the port number in the **Port** box. In most cases, the port number is left blank.
5. Click the **Test Connection** hyperlink.

The wizard connects your machine with the license server to verify whether your machine can check out and check in a license for the product.

# Using the License Server Manager (ladmin) on a FlexNet Licensing Server to Import Self-Hosted Licenses and Perform Related Tasks

The FlexNet Licensing Server software includes a license server manager (ladmin). The license server manager has a local Web-based user interface that lets you perform tasks such as the following ones:

- Import existing self-hosted and concurrent license files for your Flexera Software products.
- Perform all server configuration and most administration functions.
- Add or remove users, and configure their privileges.

To see detailed information on how to use ladmin, see the documentation that is displayed when you click the Help button in the upper-right corner of this site.

## Launching ladmin

You can launch ladmin and sign in to it regardless of whether you are using the machine that has the FlexNet Licensing Server or a different machine in your organization.

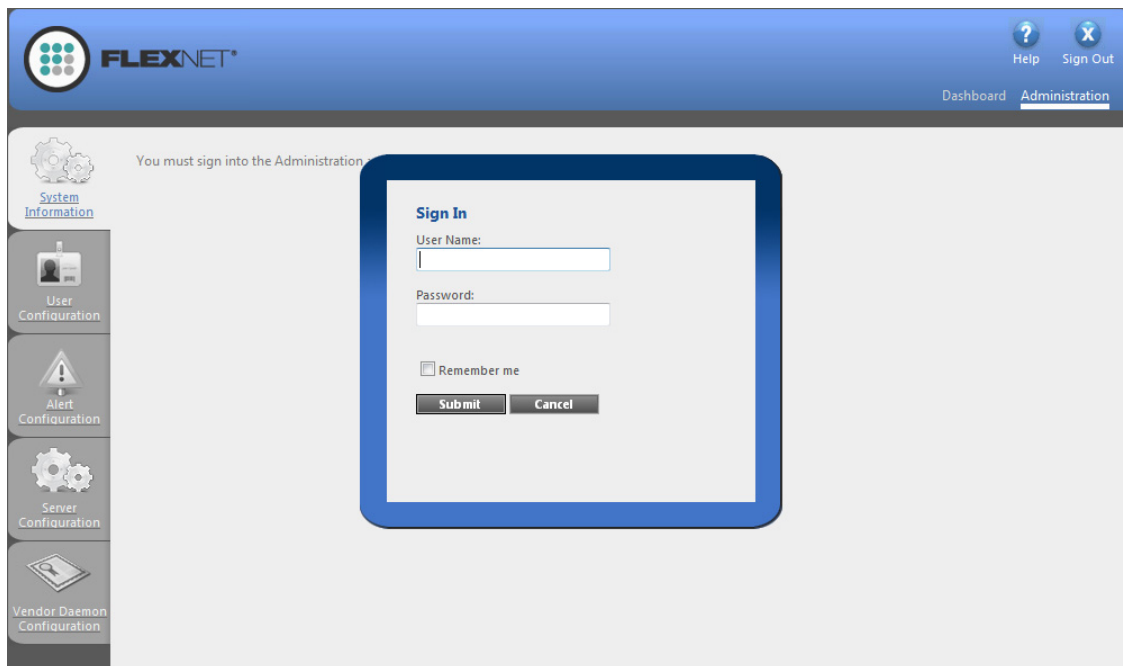


### Task

#### To launch ladmin:

1. Open a Web browser and do one of the following:
  - If you are using the machine that has the FlexNet Licensing Server, visit the following site:  
`http://localhost:Port`  
*Port* is the HTTP port number that is used to host the Web server; this is configured when the FlexNet Licensing Server software is installed. The default port number is 8080.
  - If you are using a different machine (one that is not your FlexNet Licensing Server), visit the following site:  
`http://MachineName:Port`  
*MachineName* represents the name of the machine that has the FlexNet Licensing Server software. *Port* is the HTTP port number that is used to host the Web server; this is configured when the FlexNet Licensing Server software is installed. The default port number is 8080.

2. In the upper-right corner of the site, click the **Administration** link. The site displays the **Sign In** page.



3. Sign in. The default sign-in information is as follows. If this is the first time that you are signing in with these credentials, lmadmin prompts you to change the password.
  - User Name: admin
  - Password: admin



**Tip:** If the FlexNet Licensing Server is configured to run as a service, you can start the FlexNet Licensing Server service by using the Windows Services administrative tool. If the FlexNet Licensing Server is not configured to run as a service, you can start it by running `lmadmin.exe`. The FlexNet Licensing Server must be started in order to allow users to check out and check in licenses.

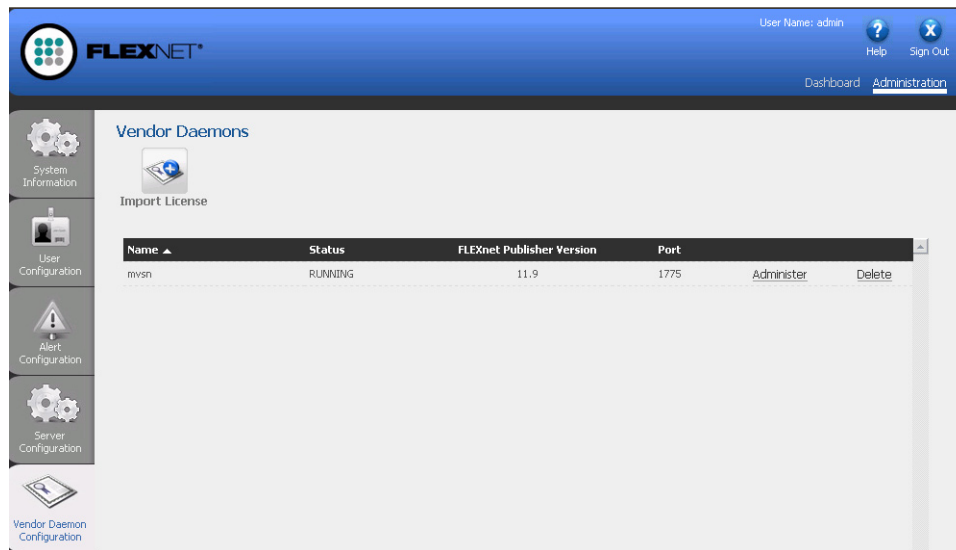
## Importing a License File into lmadmin

The Vendor Daemon Configuration page in lmadmin enables you to import license files for a vendor daemon.



**Task** To import a license file for an existing vendor daemon:

1. Click the **Administration** link, and then click the **Vendor Daemon Configuration** tab.



2. Click the **Import License** button. The **Import License File** page opens.

**Import License File**

License File from Your Local Machine:

  
  
 Overwrite License File on License Server  
 

3. Specify the path to the license file (.lic) that you want to use, or click the **Browse** button to navigate to it.
4. Optionally, select the **Overwrite License File on License Server** check box. If a license file exists in the upload directory on the licensing server with the same name, the licensing server will overwrite that file. This option should not be required when you are adding a new vendor daemon to the license server manager.
5. Click the **Import License** button. If this is a license file for an existing vendor, the license server manager copies the file to the appropriate directory on the licensing server.

6. If you are importing a license file for an existing vendor and you cleared the **Overwrite License File on License Server** check box, you must stop and start the vendor daemon. The new license file is read, and the licenses it contains are loaded when the vendor daemon is started.

If you imported a license file for an existing vendor and you selected the **Overwrite License File on License Server** check box, the updated license file is reread automatically by the vendor daemon; users can begin using any new licenses once this reread has completed. The new licenses are also displayed on the Dashboard.

If you imported a license file for a new vendor, the license server manager adds the vendor daemon information to the license server configuration file so that the licensing server can manage it. The license server manager copies the file to the appropriate directory on the licensing server.

## Administering a Vendor Daemon

The Vendor Daemon Configuration page in lmadmin enables you to stop a vendor daemon, start a vendor daemon, and reread a license file for a vendor daemon.



**Task** To administer a vendor daemon:

1. Click the **Administration** link, and then click the **Vendor Daemon Configuration** tab.

The screenshot shows the FlexNet Administration web interface. The top navigation bar includes the FlexNet logo, the user name 'admin', and links for 'Help' and 'Sign Out'. The main content area is titled 'Vendor Daemons' and features an 'Import License' button. Below this is a table listing the vendor daemons. The table has columns for Name, Status, FLEXnet Publisher Version, Port, and actions (Administer and Delete). One daemon named 'mvsn' is listed with a status of 'RUNNING', version '11.9', and port '1775'. A left-hand sidebar contains navigation icons for System Information, User Configuration, Alert Configuration, Server Configuration, and Vendor Daemon Configuration.

Name	Status	FLEXnet Publisher Version	Port	Administer	Delete
mvsn	RUNNING	11.9	1775		

2. In the vendor daemon summary grid, click the **Administer** hyperlink. Several settings are displayed.

The screenshot shows the 'Vendor Daemon:mvsn' configuration page. At the top, it displays 'Vendor Daemon Port in Use: 1775'. Below this is the 'Vendor Daemon Actions' section with buttons for 'Stop' and 'Reread License Files'. A 'Report Log Name' field is followed by a 'Rotate Report Logs' button. The 'General Configuration' section includes a 'License File or Directory' field with the path 'C:\Documents and Settings\DebbieLanders\My Documents\LicenseFiles\0004232c4c1f.lic'. The 'Vendor Daemon Location' field contains 'mvsn/mvsn'. Under 'Vendor Daemon Port', the 'Use default port' radio button is selected. The 'Restart Retries' field is set to '3'. There is an unchecked checkbox for 'Enable Date-based Versions'. At the bottom right, there are 'Save' and 'Cancel' buttons.

3. Use the following settings to perform the required tasks.
  - **Vendor Daemon Port in Use**—This read-only setting displays the TCP/IP port number that the vendor daemon uses for communication with FlexEnabled applications.
  - **Stop**—This button stops the vendor daemon but leaves lmadmin running. When you stop a vendor daemon, this button changes to Start.
  - **Start**—This button starts the vendor daemon. This button is displayed only if the vendor daemon is stopped. When you start the vendor daemon, the vendor daemon reads the license files to load the license rights into memory. When you start a vendor daemon, this button changes to Stop.
  - **Reread License Files**—This button rereads the contents of the license files, trusted storage, and any vendor daemon options file and then loads the information into memory. The license files that are specified in the License File or Directory setting in the General Configuration section are reread, unless the value of the License File or Directory setting has been changed when a restart of the vendor daemon is required. Typically this button is used when the content of the license file or options file has been edited.



- **Report Log Name**—Enter the name of the file in which to save the current report log.
- **Rotate Report Logs**—When you click this button, the FlexNet Licensing Server renames the existing report log to the name in the Report Log Name setting and creates a new empty report log file using the name in the options file. To use this capability, you must enable report logging using the options file.

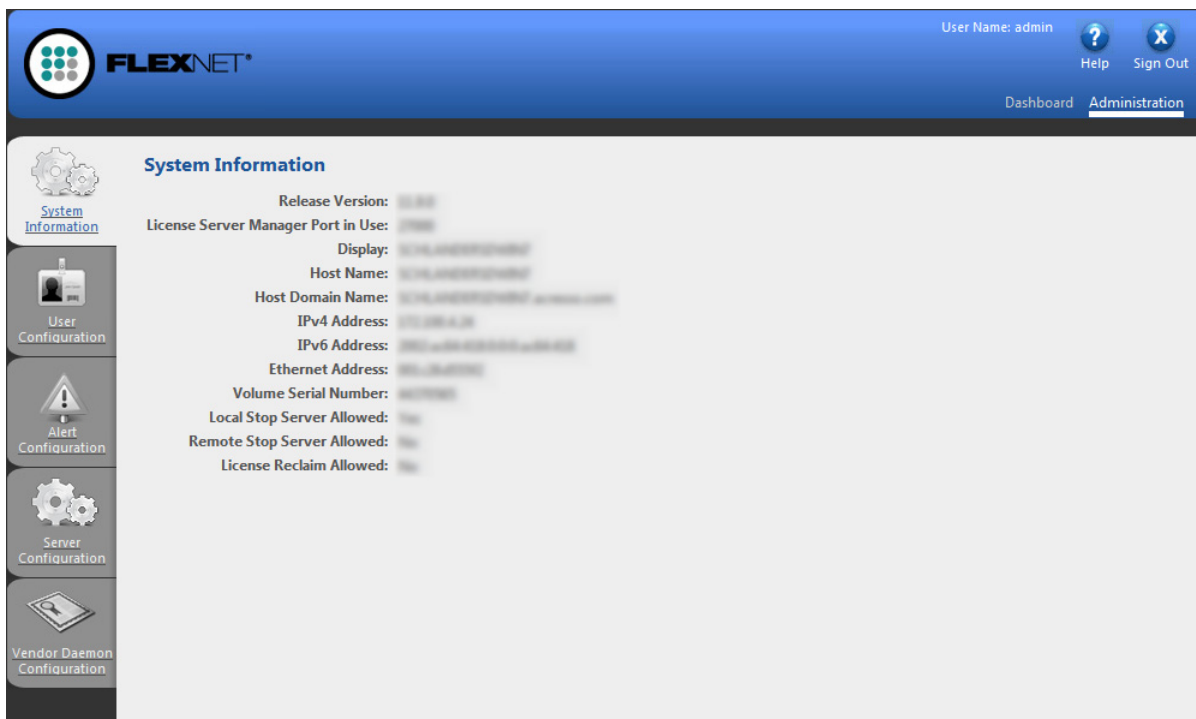
## Viewing System Information about the FlexNet Licensing Server

The license server manager (Imadmin) shows information about the FlexNet Licensing Server and the system that is running the FlexNet Licensing Server software.



**Task** To view system information in Imadmin:

Click the **Administration** link, and then click the **System Information** tab.



The System Information tab shows the following information:

- **Release Version**—Release version of the FlexNet Licensing Server.
- **License Server Manager Port in Use**—Port number that the Imadmin uses to listen for communication. To configure the port number, use the Server Configuration tab.
- **Display**—On Windows-based systems, this is the system name or the terminal server client name (in a terminal server environment). On UNIX-based systems, this is the X-Display name or the value that is returned by the `ttyname()` (or comparable) function.
- **Host Name**—The host name of the system where the FlexNet Licensing Server is running (for example, **prodo1**).
- **Host Domain Name**—The fully qualified host name of the system on the domain where the licensing server is running (for example, **prodo1.flexerasoftware.com**).

- **IPv4 Address**—IP version 4 address that is used to identify the system (for example, **255.255.255.255**). The IPv4 address is shown when the system has IPv4 enabled.
- **IPv6 Address**—IP version 6 address that is used to identify the system (for example, **ffff:ffff:ffff:ffff:ffff:ffff:ffff:ffff**). The IPv6 address is shown when the system has IPv6 enabled.
- **Ethernet Address**—The machine's host ID (which is the MAC address of the machine and is also called the physical address) that identifies the system where the FlexNet Licensing Server software is running.
- **Volume Serial Number**—The hard disk serial number that identifies the system where the licensing server is running.
- **Local Stop Server Allowed**—Indicates whether you can stop the FlexNet Licensing Server using the `lmdown` utility running on the machine where the FlexNet Licensing Server is running (the local machine) or from the license server management interface. To configure this setting, use the `-allowStopServer` command-line parameter when you run the `lmadmin`.
- **Remote Stop Server Allowed**—Indicates whether you can stop the FlexNet Licensing Server.

If No is selected, you cannot stop the FlexNet Licensing Server from a remote machine using `lmdown` or the license server management interface.

If Yes is selected, you can stop the FlexNet Licensing Server using either of the following methods:

- Use `lmdown` from a remote machine—that is, a machine other than the one on which `lmadmin` is running.
- Click the Stop Server button on a license server management interface that is running on a remote machine.

## **Chapter 1: Downloads and Licensing for AdminStudio 11.x**

*Using the License Server Manager (ladmin) on a FlexNet Licensing Server to Import Self-Hosted Licenses and Perform Related Tasks*