

Using the \$IA_BROWSE_FOLDERS\$ Variable to Specify Native or Swing Resources

The InstallAnywhere \$IA_BROWSE_FOLDERS\$ variable controls whether InstallAnywhere installers will use **Swing** or **Native** resources to render the **Browse for Folder** dialog box (also called the **Select Folder** dialog box). This distinction is important when localizing an installer.

- **Native**—When the \$IA_BROWSE_FOLDERS\$ variable is set to **Native**, the installer renders a **Browse for Folder** dialog box that has a look and feel consistent with the end user’s operating system. However, if you choose the **Native** option, installers running in languages other than the target system’s locale will display text in that system’s locale rather than in the installer-selected language. For example, if an end user installing an application on a target operating system using the English locale chooses German as the selected language in the installer, some English strings will appear on the **Browse for Folder** dialog box.
- **Swing**—When the \$IA_BROWSE_FOLDERS\$ variable is set to **Swing**, the installer renders a **Browse for Folder** dialog box that uses the correct locale for all languages, and it is consistent across different platforms. However, the dialog box may not provide a fully native experience for end users. It may have a different layout than the standard **Browse for Folder** dialog box rendered by the end user’s operating system.

Comparison between Native and Swing Settings

The following images illustrate the differences between the **Browse for Folder** dialog box rendered with **Native** resources versus **Swing** on Windows and Linux systems.

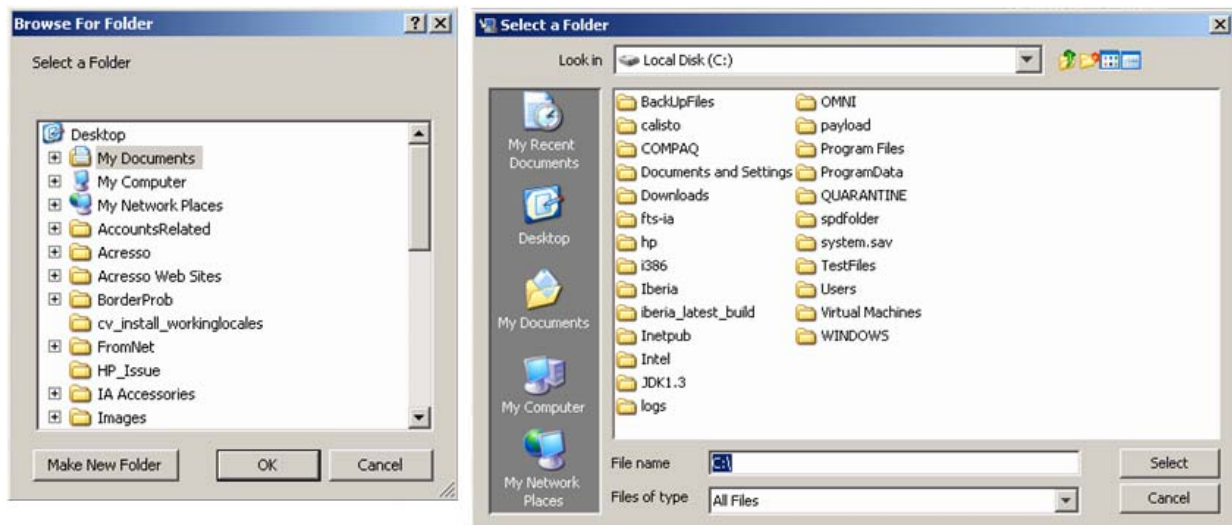


Figure 1: Native (Left) vs. Swing (Right) Resources on Windows

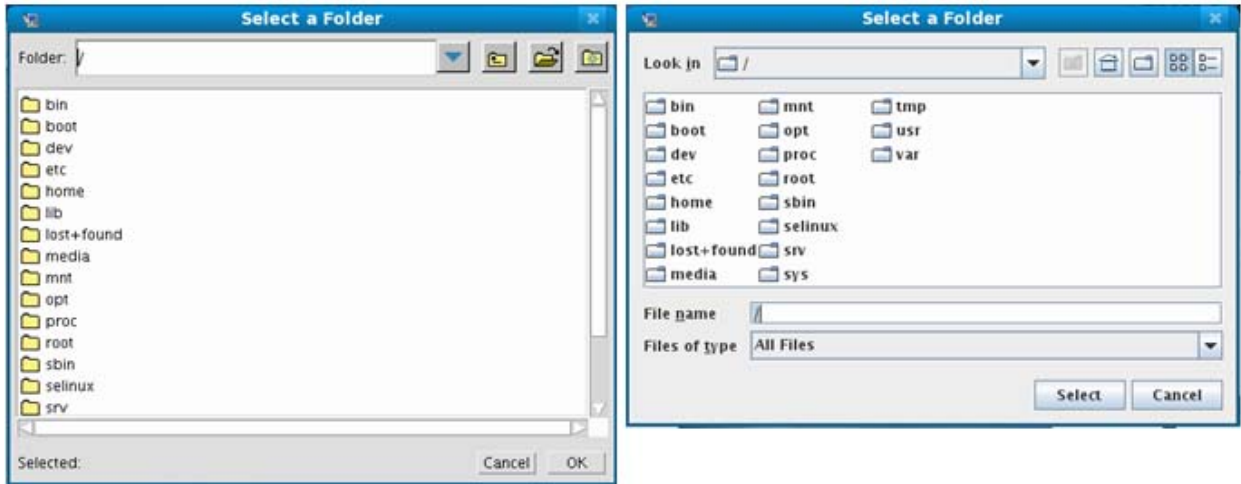


Figure 2: Native (Left) vs. Swing (Right) Resources on Linux