

Tip: Using Check Boxes in Windows Installer

Robert Dickau
Senior Technical Trainer
Flexera Software

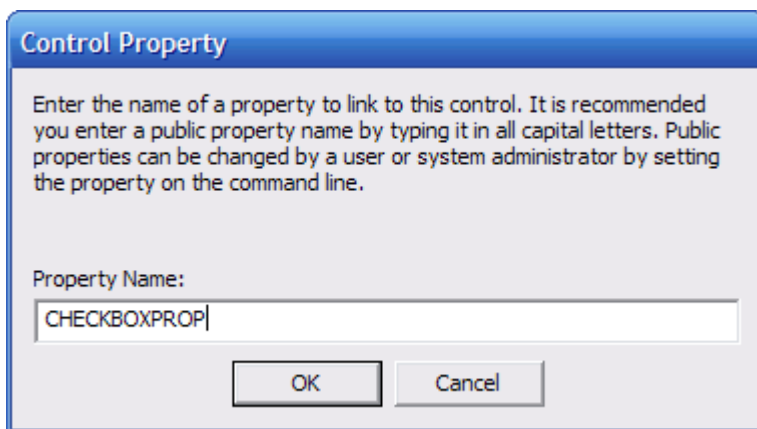
Abstract

In Windows Installer, every type of user-interface control that interacts with the user is associated with a Windows Installer property, and the property's value corresponds to the user's selection or input. For example, the property associated with an edit field control stores the text typed by the user; a radio button group's property contains the value associated with the selected radio button; and a list box control's property holds the value associated with the currently selected list element.

This article describes how to use check box controls in Windows Installer (Basic MSI) dialog boxes.

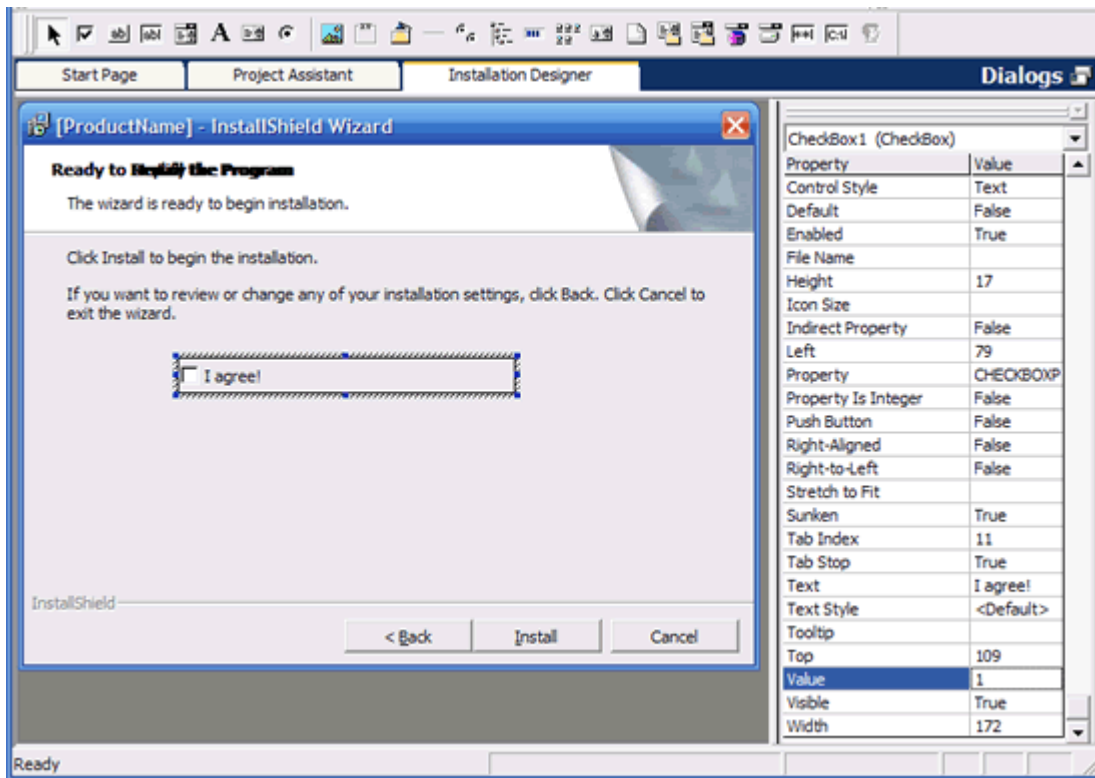
Check Boxes and Properties

When you add a check box control to a Basic MSI dialog box, InstallShield prompts you to enter the name of a property to associate with the control.



(As with any type of control, you should specify the name of a public property—one with an all-uppercase name, such as CHECKBOXPROP—if you want to be able to use the property's value during the Execute sequence of your installation program; for example, if you want to write its value to the registry or to an INI file.)

With the new check box control selected in the Dialog Editor, you will need to set the Value setting. The Value setting contains the value assigned to the property at run time when the check box is selected. In the following figure, the Value setting is set to 1.



For any type of control, the initial value or state of the control is defined by the corresponding property's value. The value can be set in the Property table. In the case of a check box control, the initial state can be checked (selected) or unchecked (cleared):

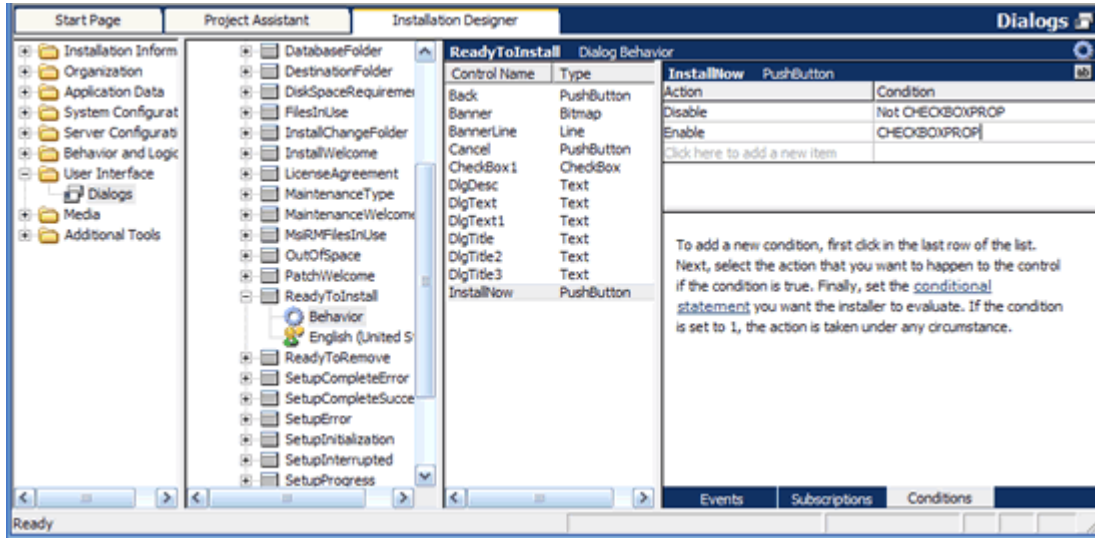
- To have the check box initially checked, use the Property Manager view of the InstallShield environment to set the property (CHECKBOXPROP) to the same value you defined in the check box control's Value setting (1, in this example).
- To have the check box initially unchecked, delete the property (CHECKBOXPROP) from the Property Manager view.

At run time, if the check box is selected, the condition **CHECKBOXPROP** will succeed (as will **CHECKBOXPROP=1**). If the check box is unselected the property will be undefined, and the condition **Not CHECKBOXPROP** will succeed (as will **CHECKBOXPROP<>1**).

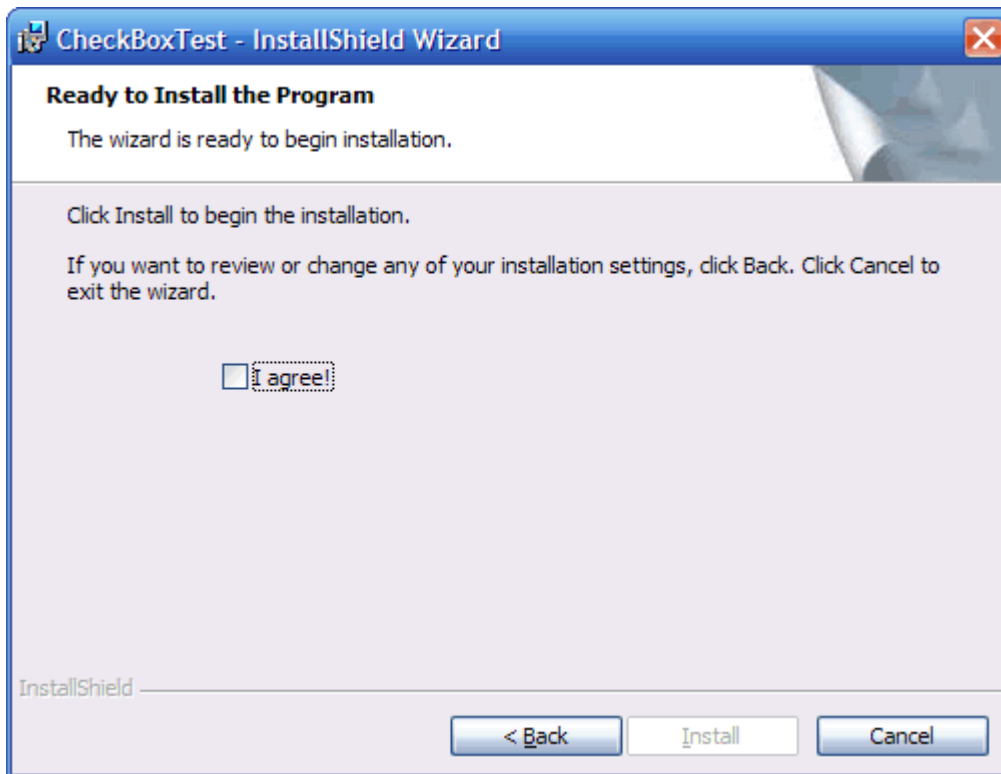
For an example of using the property's value at run time, assume you added the check box to the ReadyToInstall dialog box (as in the previous figure); you can use the state of the check box to determine whether to enable the Install button. To do this:

1. Select the Behavior node for the ReadyToInstall dialog box.
2. Select the Conditions tab in the lower-right corner of the environment.
3. Select InstallNow from the list of controls.
4. Enter a Disable action with condition **Not CHECKBOXPROP**.

5. Enter an Enable action with condition **CHECKBOXPROP**.



At run time, when the user clears the check box, the Install button is disabled.



For a similar example, open the Installation Interview page of the Project Assistant, and select the answer Yes to the question "Do you want to give users the option to launch your application when the installation completes?", specifying an executable the user can launch. Doing so conditionally enables a check box control on the SetupCompleteSuccess dialog box; the check box control's property is used in a conditional DoAction control event that can launch one of your installation's executables.